

## UniCircle® G316™



Helps Reduce Rolling  
Resistance To Enhance  
Fuel Economy.

**\$230**

\*Spliceless UniCircle® construction offers enhanced treadwear, helps promote uniformity and enhances adhesion to the casing.

• 12/32" tread depth helps promote low rolling resistance to enhance fuel economy and long, even wear.

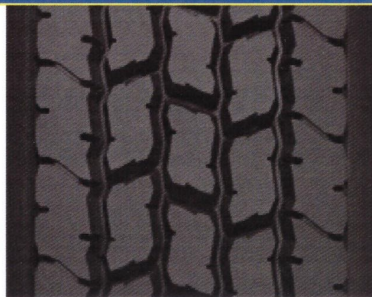
• Solid shoulder rib and uniquely shaped pressure distribution groove help minimize shoulder wear for many miles to removal.

• Two wide circumferential grooves and lateral grooves help deliver all-season performance on wet, snowy or dry roads.

• Cool-running, triple-compound construction helps reduce the amount of energy generated within the tread for low rolling resistance.



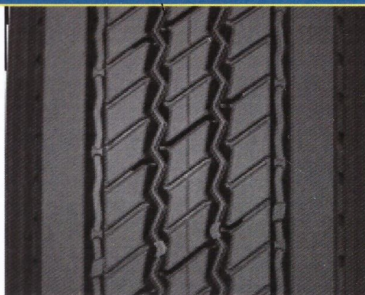
## Michelin XDA-HT™



**\$290**

- ◆ Unique two compound design to help deliver long mileage and minimize internal casing temperatures
- ◆ Solid shoulder design optimized for long, smooth wear
- ◆ Open lug design provides excellent traction in adverse conditions

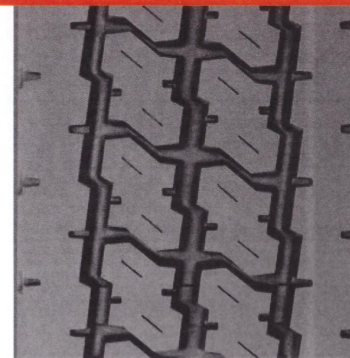
## Michelin XZE®



**\$250**

- ◆ Solid shoulders to withstand scrub and abrasion
- ◆ Deep siping optimized for extra traction
- ◆ 16/32nds or 18/32nds tread depth depending on tread width

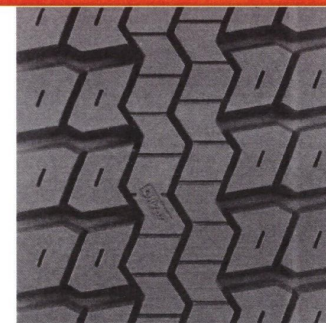
## Power Trac



**\$225**

- High-tech, drive axle design reduces irregular wear with air-ride suspensions

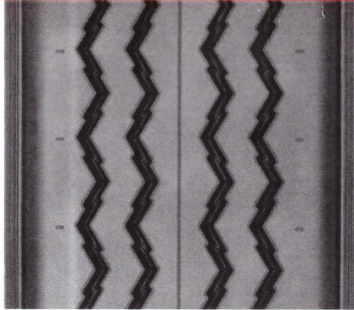
## HMT Radial



**\$225**

- Proven long wearing design for a wide variety of drive applications
- Two running ribs provide lateral stability
- Open shoulder design channels water out and promotes cool running
- Combination of element types gives even tread wear and improved traction

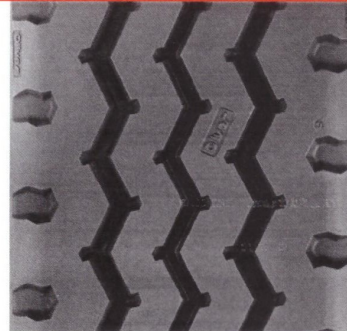
## Rugged Service Rib



**\$210**

- Specifically designed for rugged service spread/multi-axle highway trailer applications
- 18/32" tread depth provides optimum wear in high-scruff service
- Rounded shoulders and abbreviated wings provide shoulder adhesion and resist tread edge tearing
- TC 2000 compound contributes to good cost-per-mile performance

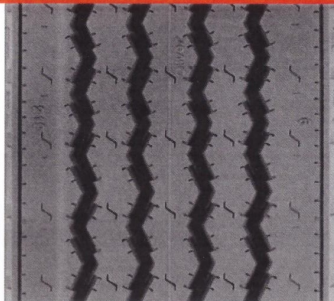
## Spread Axle



**\$210**

- Versatile tread for a wide variety of tough-duty trailer applications
- Rounded shoulders resist tread edge tearing
- TC 2000 compound contributes to good cost-per-mile performance

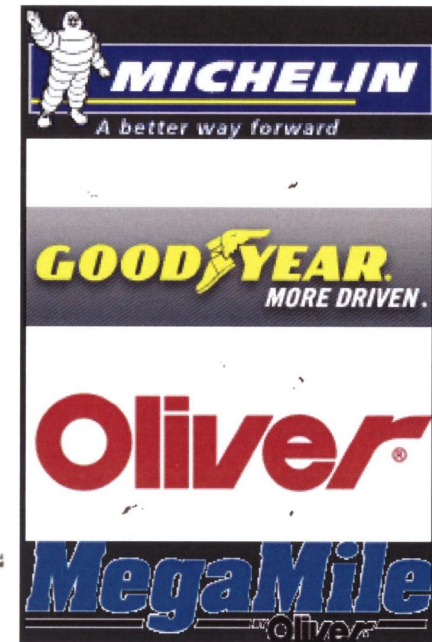
## ORCO PD® Rib



**\$210**

- Versatile five rib design is particularly recommended for trailer applications and may also be used in pick up and delivery all-position service
- Decoupler grooves help resist irregular wear across the tread face
- Excellent wet traction particularly with Serra Sipe®
- ORCO PD highway compound provides good mileage

# ACTION TIRE SERVICE



**Tel: 313-624-8401**

**24 Hr Road Service**

**5000 Wyoming Ste. 164**

**Dearborn MI 48126**

**Fax: 313-624-8364**

**[actiontireshop@yahoo.com](mailto:actiontireshop@yahoo.com)**